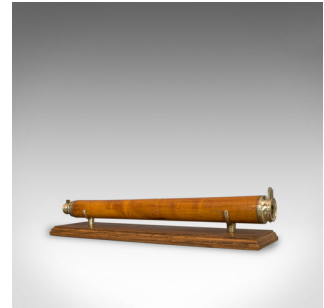


## Antique Telescope, Single Draw Refractor, English, Georgian, Circa 1760



### DESCRIPTION

Our Stock # 18.5070

This is an antique telescope, a single draw refractor for terrestrial or astronomical use. An English, Georgian piece dating to the mid-18th century, circa 1760.

Perfect for bird watching, landscape appreciation, wildlife stalking, or maritime observation. Equally suitable for observing the night sky.

- Clear, sharp optical performance, easy to focus
- Rich caramel hues to tapered mahogany barrel
- Single draw, segmented brass tube operates with smooth action
- 15mm (0.5") objective lens with sliding dust cover
- Bulbous eyecup with sliding dust cover

This antique telescope is supplied with a London Fine, oak and brass 'Captain's Stand' for display. An historic, period piece that is good to use today as it was 250 years ago.

Search [London Fine for #18.5070](#) , or scan the QR code for more photos and details

### DIMENSIONS

Closed Length: 41.5cm (16.25")

Fully Drawn Length: 63cm (24.75")

Objective Glass Diameter: 15mm (0.5")

