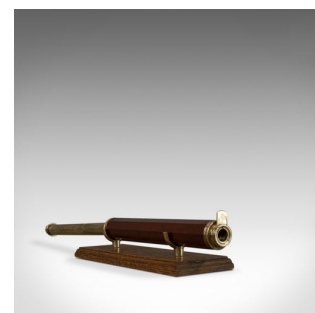
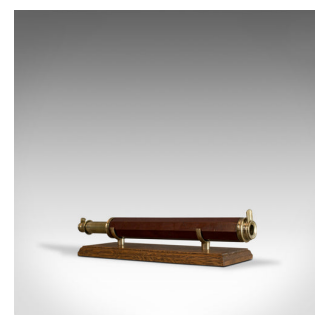


## Antique Telescope, English, Single Draw, Refractor, Terrestrial, Circa 1760



### DESCRIPTION

Our Stock # 18.5087

This is an antique telescope. An English single draw refractor for terrestrial or astronomical use and dating to the mid 18th century, circa 1760.

Perfect for bird watching, landscape appreciation, wildlife, or maritime observation. Equally suitable for observing the night sky.

- Rich colouration and a desirable aged patina to the brass
- Presenting a clear, sharp optical performance
- Octagonal, wooden parallel primary barrel
- Single, segmented brass draw tube operates smoothly
- 20mm, 0.78" objective lens with sliding dust cover
- Bulbous eye cup with sliding dust cover
- Supplied with a London Fine oak and brass 'Captain's Stand' for display

This is a charming antique telescope from the Georgian period and a historic, period piece as good to use today as it was 260 years ago. Delivered waxed, polished and ready for viewing.

Search [London Fine for #18.5087](#), or scan the QR code for more photos and details

### DIMENSIONS

Closed Length: 31.5cm (12.5")

Max Drawn Length: 54.5cm (21.5")

Objective Lens Diameter: 0.2cm (0.78")

