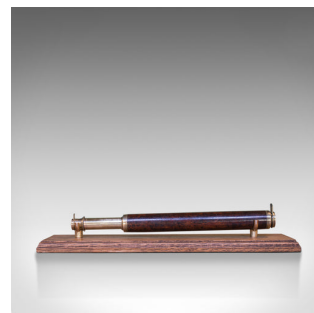
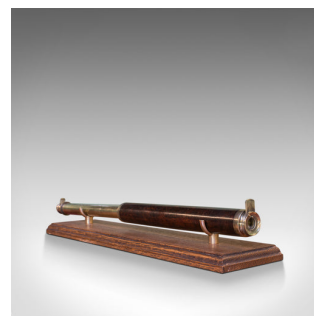


Antique Telescope, English, Single Draw, Terrestrial, Astronomical, Georgian



DESCRIPTION

Our Stock # 18.6061

This is an antique telescope, an English single draw refractor for terrestrial or astronomical use from the Georgian period and dating to mid 18th century, circa 1760.

Perfect for bird watching, landscape appreciation, wildlife, or maritime observation.

Equally suitable for observing the night sky

- Presenting a clear, sharp optical performance
- Parallel, fruitwood primary barrel
- Single, segmented draw tube in good order
- 15mm (0.5") achromatic objective lens with sliding dust cover
- Bulbous eyecup with sliding dust cover
- Supplied with a London Fine oak and brass 'Captain's Stand' for display

A historic, period piece as good to use today as it was two hundred and fifty years ago.

Search [London Fine for #18.6061](#) , or scan the QR code for more photos and details

DIMENSIONS

Closed Length: 26.5cm (10.5")

Max Drawn Length: 44cm (17.25")

Objective Lens Diameter: 15mm (0.5")

