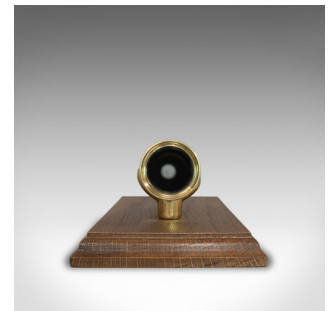


## Antique Pocket Telescope, English, Two Draw, Small, Terrestrial, Victorian



### DESCRIPTION

Our Stock # 18.6062

This is an antique pocket telescope. An English two draw small refractor for terrestrial or astronomical use and dating to the Victorian period, circa 1880.

Perfect for landscape appreciation or observing the night sky.

- Pocket telescope with bright, clear image
- Painted primary barrel in good order
- 25mm (1") objective lens
- 2 draw brass tube with smooth operation
- Flared eyecup

This is a super little telescope of high appeal and image quality. Supplied with a London Fine oak and brass 'Captain's Stand' for display.

Search [London Fine for #18.6062](#) , or scan the QR code for more photos and details

### DIMENSIONS

Closed Length: 8cm (3.25")

Fully Drawn Length: 18cm (7")

Objective Glass Diameter: 25mm (1")

