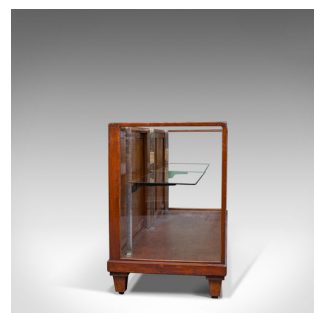
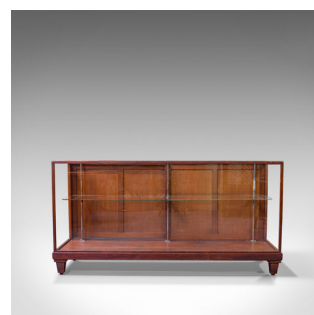


Antique Display Cabinet, English, Mahogany, Shopfitting, Showcase, Edwardian



DESCRIPTION

Our Stock # 18.6099

This is an antique display cabinet. An English, mahogany and glass commercial shopfitting showcase dating to the Edwardian period, circa 1910.

- Select mahogany typical of Edwardian commercial shopfitting
- Showing wonderful caramel hues with fine grain interest
- Displays a desirable aged patina in a wax polished finish
- Glass is bright and of showcase quality, whilst displaying marks commensurate with age

- Display area accessible by a pair of sliding doors, dressed with recessed pulls
- Original plate glass shelves can be adjusted to various positions
- Large aperture glass aids display appeal
- Raised upon four tapered peg feet beneath a continuous plinth

This is a versatile antique display cabinet, as well suited to commercial display now as it was a hundred years ago. Solid joints and construction, delivered waxed, polished and ready the home or commercial setting.

DIMENSIONS

Max Width: 183.5cm (72.25")

Max Depth: 61cm (24")

Max Height: 92.5cm (36.5")



Search [London Fine](#) for #18.6099, or scan the QR code for more photos and details

+44 (0) 207 1833 511

London Fine Ltd
 The Antique Village
 The Old Whiteways Cider Factory
 Hele, Devon, EX5 4PW

sales@londonfine.co.uk
 E. & O. E.