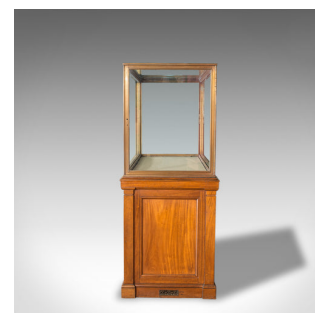


## Antique Display Cabinet, English, Walnut, Bronze, Showcase, Museum, Circa 1900



### DESCRIPTION

Our Stock # 18.6103

This is an antique display cabinet. An English, walnut and bronze showcase of museum quality and dating to the late 19th century, circa 1900.

- Generous proportion and with a desirable aged patina
- Select walnut displays fine grain interest and rich caramel hues
- Original plate glass within stout frame maximises showcase potential
- Bronze upper cabinet with large glass panes
- Removable cabinet base upholstered in cream cotton fabric

• A pair of cabinet doors to the front are dressed with working brass lock escutcheons, keys present

• Doors operated by wooden pulls

• Door jambs with original velvet dust seals - a further sign of the quality of the cabinetry

- Single shelf can be situated in multiple positions
- Cabinet has been previously prepared for lighting

Search [London Fine for #18.6103](#), or scan the QR code for more photos and details

### DIMENSIONS

Max Width: 152.5cm (60")

Max Depth: 76cm (30")

Max Height: 182.5cm (71.75")

Display Case Width: 138cm (54.25")

Display Case Depth: 61cm (24")

Display Case Height: 79cm (31")

