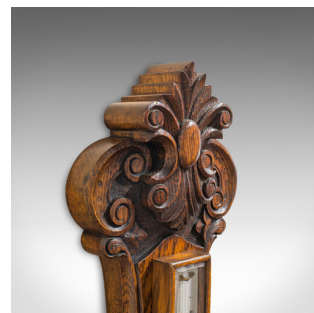
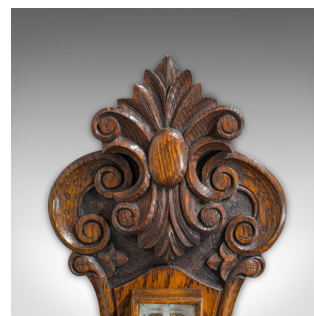


## Antique Aneroid Barometer, English, Oak, Banjo, CSSA Ltd, London, Circa 1910



## DESCRIPTION

Our Stock # 18.5719

This is an antique aneroid barometer. An English, oak banjo barometer from the Civil Service Supply Association Ltd of London and dating to the early 20th century, circa 1910.

- Select oak displays fine grain interest and a desirable aged patina
- Original glass in good order and of bright, clear optics
- Highly decorative banjo style featuring carved foliate detail
- Generously sized aneroid face with a diameter of 19.5cm (7.75")
- Attractive annotations provide clear readings of current conditions
- Secondary hand can be manually aligned to show change
- Bevelled opening displays the aneroid cell mechanism
- Mercury filled temperature displays reads in Fahrenheit and Centigrade
- Bears the initials C.S.S.A. Ltd London E.C. where they were resident at 136 Queen

Victoria Street

Search [London Fine for #18.5719](#), or scan the QR code for more photos and details

## DIMENSIONS

Max Width: 28cm (11")  
Max Depth: 8.5cm (3.25")  
Max Height: 88cm (34.75")

