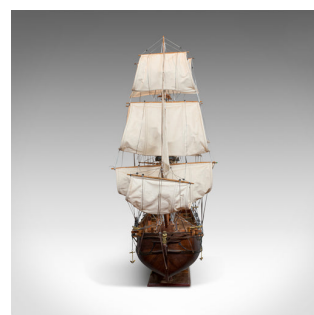


## Large Vintage Model, The Bounty, English, Mahogany, Collectible, Ship, Display



### DESCRIPTION

Our Stock # 18.6125

This is a large vintage model of the Bounty. An English, mahogany collectible model ship on display stand and dating to the 20th century.

The Bounty was purchased by the Royal Navy to transport plants around the Caribbean islands. Under the command of William Bligh, the ship fell to the infamous 'mutiny on the Bounty' and was set alight whilst moored at Pitcairn Island.

- Fine detail and in good order throughout
- Select mahogany displays fine grain interest
- Fabric sails and rigging add further appeal
- Impressive proportion at over 5 foot from prow to stern
- Ship's figurehead features at the prow
- Dressed with protective cannon and gilded detail
- Display stand featuring the ship's name plinth

This is a generously sized vintage model of the Bounty and sure to add interest to any room. Delivered ready for the home.

### DIMENSIONS

Max Width: 167cm (65.75")  
 Max Depth: 52cm (20.5")  
 Max Height: 120cm (47.25")  
 Display Stand:  
 Width: 65.5cm (25.75")  
 Depth: 19cm (7.5")



Search [London Fine](#) for #18.6125, or scan the QR code for more photos and details

+44 (0) 207 1833 511

London Fine Ltd  
 The Antique Village  
 The Old Whiteways Cider Factory  
 Hele, Devon, EX5 4PW

sales@londonfine.co.uk  
 E. & O. E.