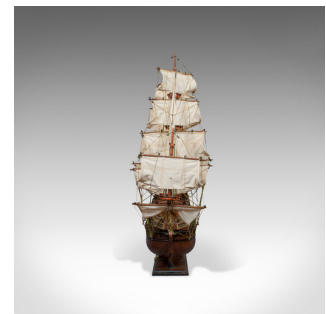


Large Vintage Model, Sovereign of the Seas, English, Mahogany, Collectible, Ship



DESCRIPTION

Our Stock # 18.6130

This is a large vintage model of the Sovereign of the Seas. An English, mahogany collectable ship on display stand and dating to the 20th century.

Sovereign of the Seas was personally ordered by King Charles I to carry 102 guns, despite being a 90 gun ship of the line, making it the most armed ship in the world at the time. The cost of the ship was a contributing factor to the English Civil War.

- Fine detail and in good order throughout.
- Select mahogany displays fine grain interest
- Fabric sails and rigging add further appeal
- Intricate figurehead depicts a cavalryman on horseback
- Profusely detailed upper deck befits the status as the King's flagship
- Three gun decks feature miniature cannon
- Stout hull presents well on a display stand, bearing the ship's name

This is a finely detailed large vintage model, with high appeal for collectors. Delivered ready for the home.

Search [London Fine for #18.6130](#), or scan the QR code for more photos and details

DIMENSIONS

Max Width: 90cm (35.5")

Max Depth: 35cm (13.75")

Max Height: 82cm (32.25")

Display Stand:

Width: 53cm (20.75")

Depth: 13.5cm (5.25")

