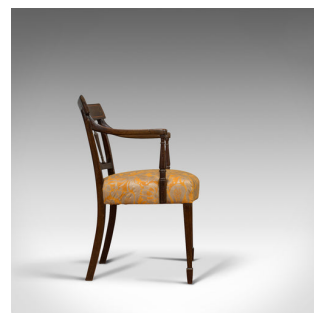


## Antique Elbow chair, Mahogany, Armchair, Sheraton Overtones, Regency Circa 1820



### DESCRIPTION

Our Stock # 18.6134

This is an antique elbow chair. An English, mahogany armchair displaying Sheraton overtones and dating to the Regency period of the early 19th century, circa 1820.

- Of Sheraton form and displays a desirable aged patina
- Select mahogany with consistent colour throughout
- Comfortable, traditionally filled stuff-over seat
- Recently professionally reupholstered
- Quality silk cloth with bold pattern in saffron hues
- Dished crest rail delineated with inlaid border
- Slender, fluted baluster spindles carved with foliate detail
- Sinuous, oblique reeded arms open invitingly
- Standing upon square section legs terminating in spade feet to the fore and swept to the rear

This is a wonderful example of an antique elbow chair with Sheraton influences. Solid joints and construction, delivered waxed, polished and ready for the home.

Search [London Fine for #18.6134](#) , or scan the QR code for more photos and details

### DIMENSIONS

Max Width: 55cm (21.75")  
 Max Depth: 48cm (19")  
 Max Height: 83.5cm (32.75")  
 Seat Cushion Width: 48cm (19")  
 Seat Cushion Depth: 45.5cm (18")  
 Seat Cushion Height: 49cm (19.25")

