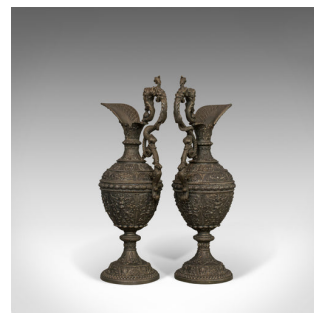
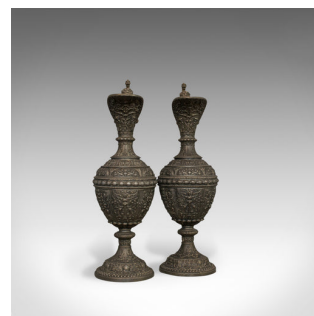
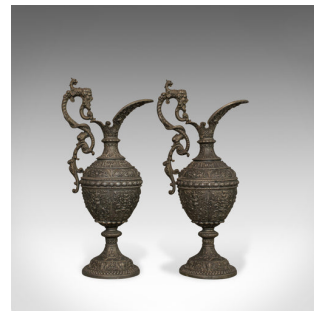


Pair Of, Antique Ewers, Classical Taste, French, Bronze Spelter, Jug, Pitcher



DESCRIPTION

Our Stock # 18.6147

This is a pair of antique ewers in classical taste. Two French, decorative bronze spelter water jugs or wine pitchers and dating to the late 19th century, circa 1890.

- Of impressive, highly decorated classical taste - perfect for fine dining
- Bronze spelter displays a desirable aged patina
- Resplendent with good, consistent colour throughout
- Sinuous, vine style handles with classical masks and motif
- Equatorial beading delineates the spout and stem of the body
- Concentric, tiered design with attractive decor to each band
- Cast net pattern to the broad spout, with profuse fleur-de-lys detail to the underside
- Continuation of classical form in the squat baluster stem and base

This is a fantastic pair of antique ewers and impressive in their strong, classical taste. Delivered ready for the home.

Search [London Fine for #18.6147](#) , or scan the QR code for more photos and details

DIMENSIONS

Max Width: 22.5cm (8.75")

Max Depth: 14.5cm (5.75")

Max Height: 48.5cm (19")

