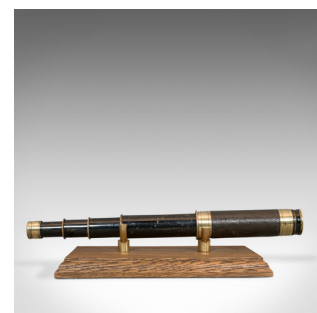
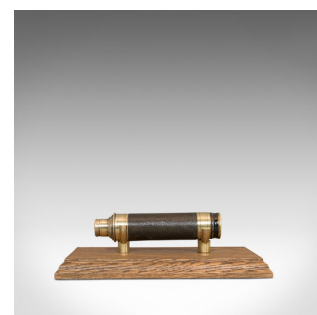


## Antique Pocket Telescope, English, Brass, Leather, 4 Draw, Hartley of Todmorden



### DESCRIPTION

Our Stock # 18.6155

This is an antique pocket telescope. An English brass and leather 4 draw refractor, inscribed Hartley - Todmorden and dating to the late 19th century, circa 1880.

- Black painted brass displays a desirable aged patina
- Primary tube bound in leather and in good order
- 4 draw tubes operate with smooth action
- 25mm (1") diameter objective lens
- Eyecup bears the maker's mark Hartley - Todmorden V.B.G
- Supplied with a London Fine oak and brass 'captain's stand' for display

This is an antique pocket telescope, which is as good to use today as it was over one hundred years ago. Delivered polished and ready for the home.

Search [London Fine for #18.6155](#) , or scan the QR code for more photos and details

### DIMENSIONS

Closed Length: 12.5cm (5")

Max Drawn Length: 27.5cm (10.75")

Objective Glass Diameter: 25mm (1")

