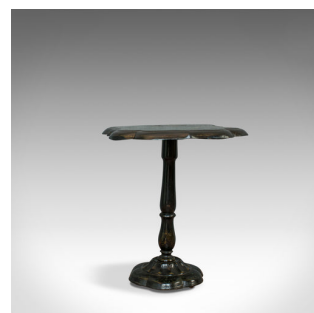
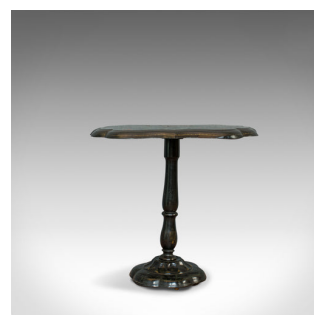
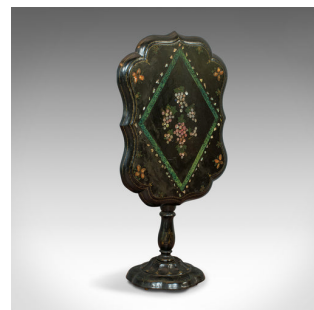


Antique Table, Ebonised, Papier Mache, Mother of Pearl, Side, Lamp, Wine, Tilt



DESCRIPTION

Our Stock # 11.2203

This is an antique table. An English, ebonised papier mache and mother of pearl side, lamp or wine table with tilt and dating to the Victorian period, circa 1870.

- Fascinating form and good order throughout
- Ebonised stocks of papier-mache display a desirable aged patina
- Mother of pearl inlay shimmers in the catch-light
- Central hanging grape motif with a green diamond border and foliate detail to the corners
- Pleasing inverted tray style with serpentine form
- Smooth tilt action for placement to the side or in the centre of a room
- Stout, rolled top locks reassuringly into place
- Standing over a shaped central column, which flows into a triple step base.

A quality, period antique table and a lovely example of this classic Victorian style. Solid joints and construction and delivered waxed, polished and ready for the home.

Search [London Fine for #11.2203](#) , or scan the QR code for more photos and details

DIMENSIONS

Max Width: 78cm (30.75")

Max Depth: 59cm (23.25")

Max Height: 74cm (29.25")

