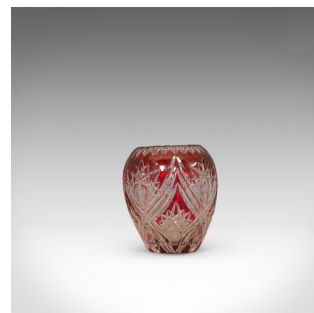
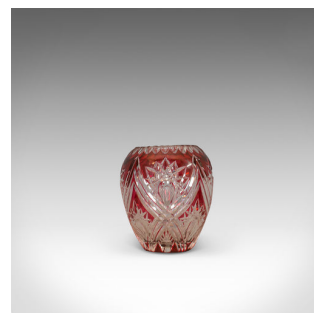
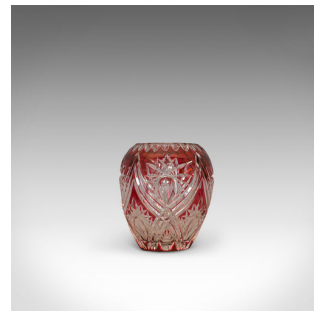


Vintage Decorative Vase, English, Cut Glass, Vessel, Royal Brierley, Circa 1940



DESCRIPTION

Our Stock # 18.6179

This is a vintage decorative vase. An English, cut glass vessel in rich cranberry colour by Royal Brierley Crystal and dating to the mid 20th century, circa 1940.

- Of sinuous form and with copious visual appeal
- Cranberry hues with striking cut glass pattern
- Displays a desirable aged patina
- Wonderfully clear glass with fascinating views of the inverse patterns
- Continuous floral design with facets of sprouting flowers and stems
- Neck decorated with a petal design
- The base finished in highly detailed geometric forms
- Brierley maker's mark to the base, with faint imprint which reads 'IERLEY'

This is a wonderful vintage vase and example of Royal Brierley's craftsmanship. Delivered polished and ready for the home.

Search [London Fine for #18.6179](#), or scan the QR code for more photos and details

DIMENSIONS

Max Width: 19cm (7.5")

Max Depth: 19cm (7.5")

Max Height: 23cm (9")

Mouth Diameter: 11cm (4.25")

Find out more about Royal Brierley here...

