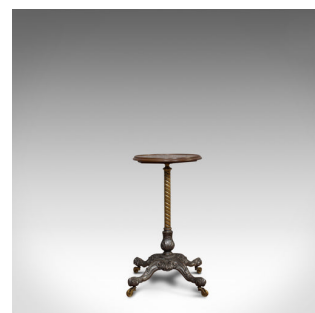
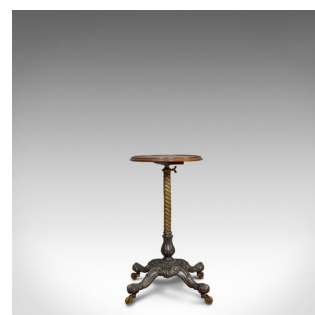
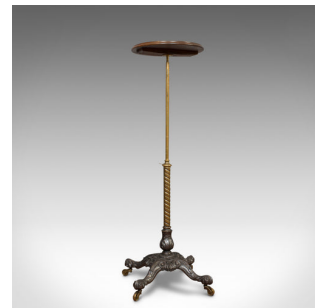


Antique Adjustable Wine Table, English, Mahogany, Cast Iron, Plant, Jardiniere



DESCRIPTION

Our Stock # 18.6140

This is an antique adjustable wine table. An English, mahogany and cast iron plant stand or jardiniere and dating to the Victorian period, circa 1860.

- Generously adjustable and of pleasing form
- Mahogany and cast iron displays a desirable aged patina
- Select mahogany with fine grain interest and rich caramel hues
- The eye-catching top is decorated with a deep, tiered edge moulding
- A barley twist central column hosts the adjustable riser, fastened with a twist-off catch
- Height adjusts within a 52cm (20.5") range
- Squat baluster with foliate motif anchors the riser to the base
- Four, decorated cast iron legs with gently curving scrolled form
- Riding upon charming brass castors

This is a versatile antique adjustable table, perfect indoors for serving wine or as a jardiniere. Solid joints and construction, delivered waxed, polished and ready for the home.

DIMENSIONS

Max Width: 39.5cm (15.5")
 Max Depth: 39.5cm (15.5")
 Lowered Height: 70cm (27.5")
 Raised Height: 122.5cm (48.25")
 Table Diameter: 36.5cm (14.25")



Search [London Fine for #18.6140](#), or scan the QR code for more photos and details

+44 (0) 207 1833 511

London Fine Ltd
 The Antique Village
 The Old Whiteways Cider Factory
 Hele, Devon, EX5 4PW

sales@londonfine.co.uk
 E. & O. E.