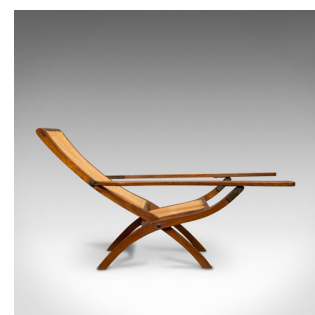


Antique Plantation Chair, Teak, Bergere, Steamer Deck, Garden Lounger, Edwardian



DESCRIPTION

Our Stock # 18.6191

This is an antique plantation chair. An English, solid teak and bergere cane steamer-deck armchair, or garden lounger, dating to the Edwardian period of the early 20th century, circa 1910.

- Of unusual, fold-away form
- Displays a desirable aged patina
- Solid teak with fine grain interest to its wax polish finish
- Cane in good order displaying wonderful colour
- Relaxed backrest position for those peaceful moments
- Long, stout arms fold upright for stowage
- Dressed with bronze twist-locks and hinges
- Sweeping legs add to the elegance

This is an unusual, but ever so fascinating antique plantation chair, perfect for suntraps and temperate sojourns. Solid joints and construction, delivered waxed, polished and ready for the home.

Search [London Fine for #18.6191](#) , or scan the QR code for more photos and details

DIMENSIONS

Max Width: 64.5cm (25.5")
 Max Depth: 146.5cm (57.75")
 Max Height: 83cm (32.75")
 Seat Base:
 Width: 46cm (18")
 Depth: 38cm (15")
 Height: 37.5cm (")

