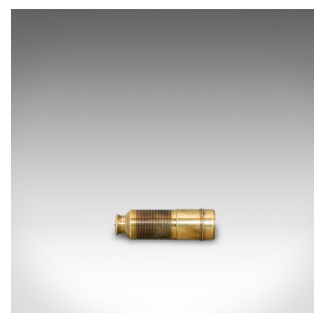
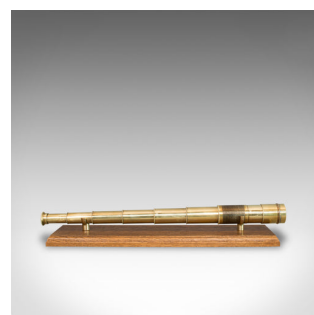
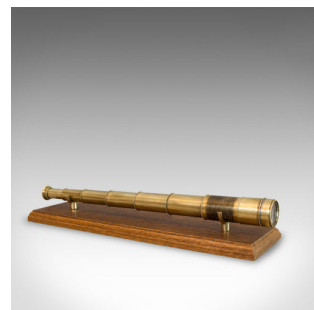


Antique Pocket Telescope, English, Brass, 6 Draw, Refractor, Terrestrial, C.1840



DESCRIPTION

Our Stock # 18.6204

This is an antique pocket telescope. An English, brass six draw refractor for terrestrial or astronomical use dating to the mid-19th century, circa 1840.

Perfect for bird watching, landscape appreciation, wildlife stalking, or maritime observation. Equally suitable for observing the night sky.

- Six draw tubes make this an ideal pocket telescope
- Tubes operate with a smooth draw action
- Primary barrel with distinctive turned ring finish
- Clear, bright objective lens has a diameter of 30mm (1.25")
- Sliding brass sunshade to the objective lens
- Flared eyecup with swivel dust cover

A fine antique pocket telescope, supplied with a London Fine oak and brass 'Captain's Stand' for display. Delivered polished and ready for the home.

Search [London Fine for #18.6204](#) , or scan the QR code for more photos and details

DIMENSIONS

Closed Length: 11cm (4.25")

Drawn Length: 44cm (17.25")

Objective Diameter: 30mm (1.25")

