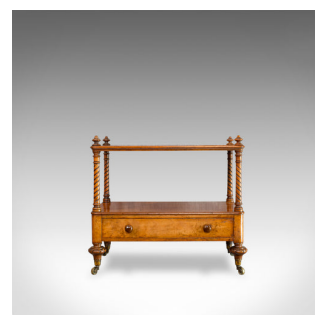
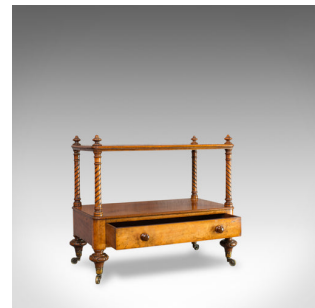


Antique Two Tier Whatnot, English, Walnut, Canterbury, Display Stand, Victorian



DESCRIPTION

Our Stock # 18.6188

This is an antique two-tier whatnot. An English, walnut Canterbury or display stand and dating to the Victorian period of the mid-19th century, circa 1870.

- Beautifully crafted with an abundance of appeal
- Displays a desirable aged patina
- Select walnut offers fine grain interest and beautiful honey hues throughout
- A quartet of turned finials grace each corner
- Attractive top surface with a width of 68.5cm (27")
- Gallery supported by elegant, helically-reeded columns
- Eye-catching with all-round appeal – perfect for centre room placement
- Generous drawer located at the front, dressed with wooden pulls
- Raised upon broad bun feet with four brass castors

This is a delightful antique whatnot, perfect as an elegant coffee table or display stand. Solid joints and construction, delivered waxed, polished and ready for the home.

Search [London Fine for #18.6188](#) , or scan the QR code for more photos and details

DIMENSIONS

- Max Width: 71cm (28")
- Max Depth: 43.5cm (17.25")
- Max Height: 61.5cm (24.25")
- Open Shelf Width: 68.5cm (27")
- Open Shelf Depth: 40cm (15.75")
- Open Shelf Height: 27cm (10.75")

