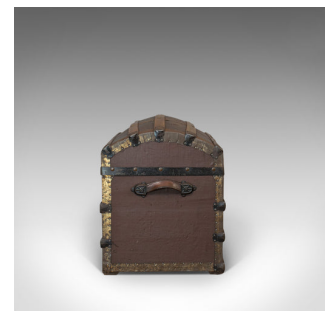
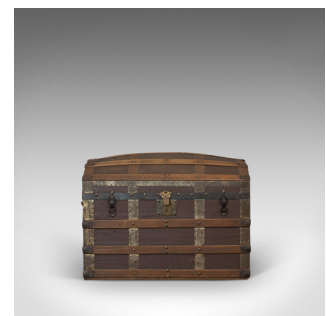




Antique Dome Top Trunk, English, Oak, Carriage Chest, Coffers, Edwardian, C.1910



DESCRIPTION

Our Stock # 18.6170

This is an antique dome-top trunk. An English, oak carriage chest or coffer dating to the Edwardian period of the early 20th century, circa 1910.

- Highly evocative trunk in fine form
- Displays a desirable aged patina
- Select oak with fine grain interest and deep, consistent hues
- Robust outer construction - strapped and bound
- Dome top dressed with broad, shaped staves
- Thick top held in place with central clasp and lock, key absent
- Interior finished with rich violet fabric – an eye-catching accoutrement
- Dressed with thick leather carry handles to each end
- Corners supported by bound shoulders for a reassuring feel

This is a fantastic antique trunk, with period appeal and modern versatility. Solid joints and construction, delivered waxed, polished and ready for the home.

Search [London Fine for #18.6170](#), or scan the QR code for more photos and details

DIMENSIONS

Max Width: 89cm (35")

Max Depth: 49cm (19.25")

Max Height: 60cm (23.5")

LIST PRICE

£685.00

