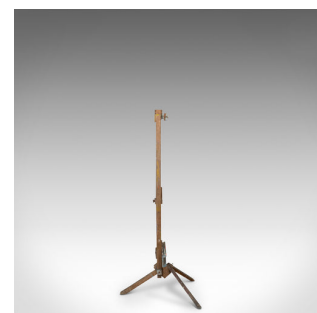
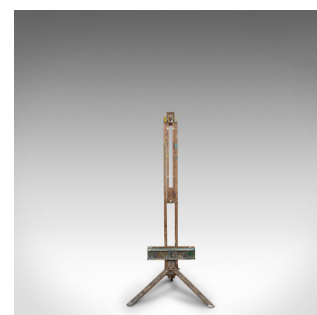
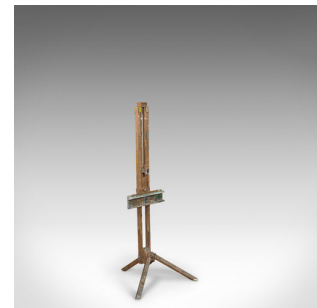


## Large Vintage Artist's Easel, English, Beech, Picture, Tripod, Canvas, C.1930



### DESCRIPTION

Our Stock # 18.6178

This is a large vintage artist's easel. An English, beech picture stand or tripod easel for a broad range of canvas sizes and dating to the mid 20th century, circa 1930.

- A versatile studio easel for the ambitious artist
- Displays a desirable aged patina with decades of colourful paint residue
- Crafted in beech with fine grain interest
- Accommodating canvases from 21cm (8.25") to 186cm (73.25")
- Adjustable mechanism to the upper reacher and the horizontal cross member
- Standing upon a trio of legs, the front pair united in a vee

This is a large, versatile vintage easel able to grow in scope with the artist's vision. Solid joints and construction, delivered polished and ready for the studio.

Search [London Fine for #18.6178](#) , or scan the QR code for more photos and details

### DIMENSIONS

Max Width: 80cm (31.5")

Max Depth: 75cm (29.5")

Minimum Height: 174cm (68.5")

Extended Height: 199.5cm (78.5")

