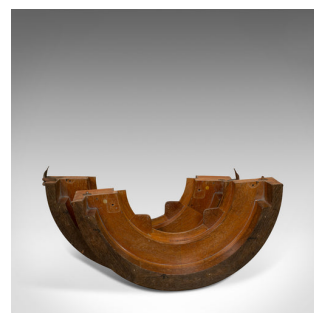
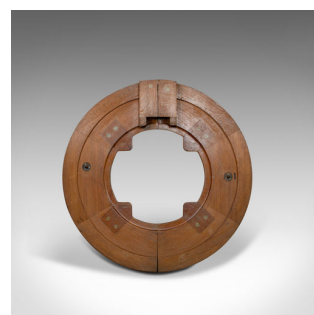


## Vintage Decorative Mould, English, Two-Piece, Circular, Factory, Pattern, Wall



### DESCRIPTION

Our Stock # 18.6195

This is a vintage decorative mould. An English, two-piece circular factory pattern part ideal for wall hanging and dating to the 20th century.

- Attractive circular decorative piece for the industrial enthusiast
- Displays a desirable aged patina, commensurate with age
- Mahogany shows fine grain interest and rich caramel hues
  - Two-piece design held with iron clasps, each one suitable to become quirky bookends
  - Flat reverse would make for an interesting hanging piece

This is a pleasing vintage decorative mould, with further versatility afforded by its two-piece design. Delivered polished and ready for the home.

Search [London Fine for #18.6195](#) , or scan the QR code for more photos and details

### DIMENSIONS

Max Width: 58.5cm (23")

Max Depth: 12cm (4.75")

Max Height: 56cm (22")

### LIST PRICE

£265.00

