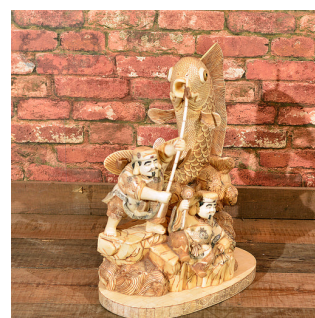
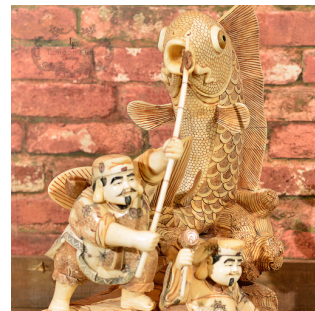


## Japanese Bone Carved Okimono Figures & Fish



### DESCRIPTION

Our Stock # LFA-1256 This is a Japanese okimono, oriental art carving dating from the early to mid 20th century. A rare bone piece in excellent condition and a real statement piece of some size at 38cm (15") wide and 53.5cm (21") tall, the intricate carving depicts a fisherman landing a giant fish with a second figure swinging a mallet before them. Every part of this fascinating sculpture is detailed with the finest of marks and carvings doubtless telling a mythological narrative. The reverse is as detailed as the fore with swirls and scrolls of water movement providing a mount for the fish. The plinth base, oval in form, is decorated with stem and foliate detail and there is a mark to the underside. A beautiful ornament of great merit and interest.

Search [London Fine](#) for #LFA-1256 or scan the QR code for more photos and details

### DIMENSIONS

Max Width: 38cm (15")  
Max Depth: 26cm (10.25")  
Max Height: 53.5cm (21")

