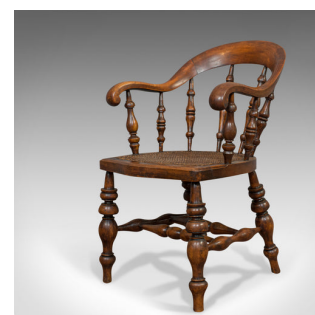


Antique Windsor Chair, English, Beech, Armchair, Bergere, Victorian, Circa 1880



**DESCRIPTION**

Our Stock # 18.6258

This is an antique Windsor chair. An English, beech, Bergere armchair dating to the Victorian period, circa 1880.

- Classic bow back style with exuberant form
- Displays a desirable aged patina
- Dark English beech with fine grain interest
- Quality, original tight cane to the seat
- Sinuous rail with serpentine arms ending in scroll detail
- Elegant spindle forms unite the arms with the seat base
- Bergere seat set within broad frame for support
- Raised upon turned baluster legs with spade feet and double-H stretchers

This is a wonderful antique Windsor armchair, resplendent with fine grain interest and appealing colour. Solid joints and construction, delivered waxed, polished and ready for the home.

Search [London Fine for #18.6258](#) , or scan the QR code for more photos and details

**DIMENSIONS**

Max Width: 58.5cm (23")  
 Max Depth: 60cm (23.5")  
 Max Height: 89cm (35")  
 Seat Height: 47cm (18.5")

