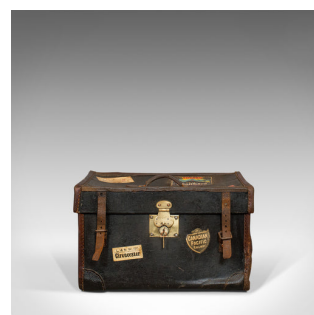


Antique Travel Trunk, English, Personal Carriage Chest, Hatbox, Circa 1910



DESCRIPTION

Our Stock # 18.6269

This is an antique travel trunk. An English, personal carriage chest or hatbox, dating to the early 20th century, circa 1910.

- A delightful trunk from the golden era of travel
- Displays a desirable aged patina
- In deep black - leather bound with contrasting brown trimwork
- Pinstripe interior provides an appealing contrast
- Leather carriage handle to the lid with brass hardware
- Pleasing, working brass lock escutcheon at the centre, key present with monogram pendant
- A pair of leather straps provide further security
- Dressed with fascinating, period travel labels
- Eye-catching label for the St. Gotthard Terminus in Lugano
- Further locations noted including Canada, Cape Town and Egypt

Search [London Fine for #18.6269](#) , or scan the QR code for more photos and details

DIMENSIONS

Max Width: 46.5cm (18.25")

Max Depth: 40cm (15.75")

Max Height: 30cm (11.75")

