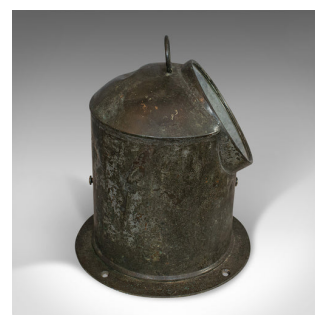


## Vintage Binnacle Compass, English, Brass, Maritime, Navigation, Instrument

**DESCRIPTION**

Our Stock # 18.6336

This is a vintage binnacle compass. An English, brass maritime navigation instrument, dating to the early 20th century, circa 1930.

- Fascinating maritime instrument
- Displays a desirable aged patina
- Weathered brass commensurate with age - one indent to lid at rear
- Replete with four screw fixings and a hanging loop
- Oil lamp absent
- Bright, glass porthole for observing the compass
- 2-axis gimbal keeps even level in rough seas
- Fluid-filled compass marked with Brooks & Hawkes, Birmingham
- Displays cardinal and intercardinal points, north represented by a fleur-de-lys motif

This vintage binnacle compass is blessed with maritime appeal and time-served patina. Delivered polished and ready for the home.

Search [London Fine for #18.6336](#), or scan the QR code for more photos and details

**DIMENSIONS**

Max Width: 21.5cm (8.5")

Max Depth: 21.5cm (8.5")

Max Height: 26cm (10.25")

