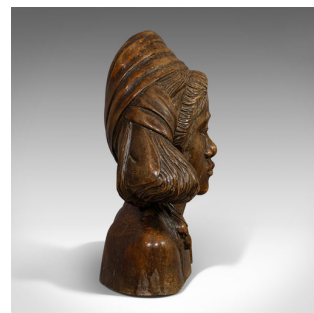
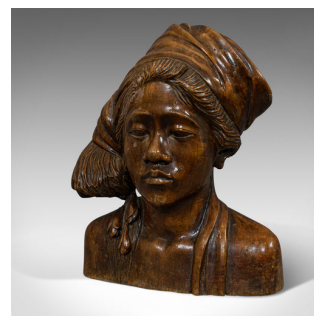
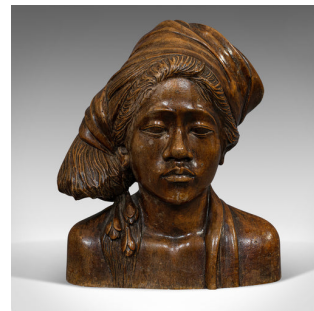


Vintage Hand Carved Bust, Oriental, Chinese Elm, Art Deco, Portrait, Circa 1940



DESCRIPTION

Our Stock # 18.6364

This is a vintage hand carved bust. An Oriental, Chinese elm Art Deco portrait, dating to the mid 20th century, circa 1940.

- Superb craftsmanship and attention to detail
- Displays a desirable aged patina
- Chinese Elm shows rich colour and grain interest
- Fine detail in abundance, especially to the hair and head scarf
- Carved tulip bulbs adding further visual interest

This is an appealing vintage bust, with impressive hand-carved craft. Delivered polished and ready for the home.

Search [London Fine for #18.6364](#), or scan the QR code for more photos and details

DIMENSIONS

Max Width: 20.5cm (8")

Max Depth: 13.5cm (5.25")

Max Height: 27cm (10.75")

