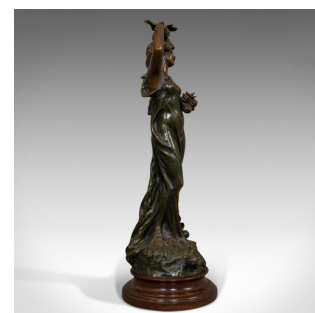
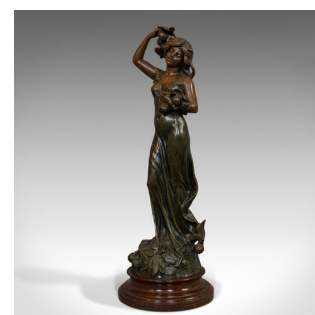
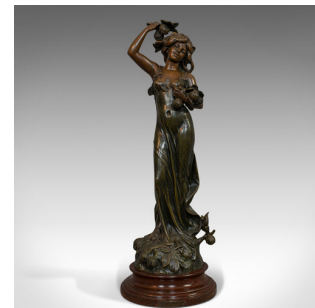


Antique Female Figure, French, Bronze Spelter, Statue, Art Nouveau, Circa 1920



DESCRIPTION

Our Stock # 18.6398

This is an antique female figure. A French, bronze spelter statue in Art Nouveau taste, dating to the early 20th century, circa 1920.

- Beautiful lithe form and colouring
- Displays a desirable aged patina
- Bronze Spelter delightfully weathered
- Standing upon a mahogany base with russet hues
- Elegant female figure in relaxed pose with pleasingly rendered detail
- Realised upon a woodland foliate scene to the base
- Small plaque at base reads in French; 'Parure D'Automne - par Hip Morean (Sculpt.)
- Translates to English as 'Fall' or 'Autumn Set'

This is a delightful bronze spelter statue, with an elegant tone as expected of Art Nouveau sculpture. Delivered polished and ready for the home.

Search [London Fine for #18.6398](#) , or scan the QR code for more photos and details

DIMENSIONS

Max Width: 18cm (7")

Max Depth: 18cm (7")

Max Height: 60.5cm (23.75")

