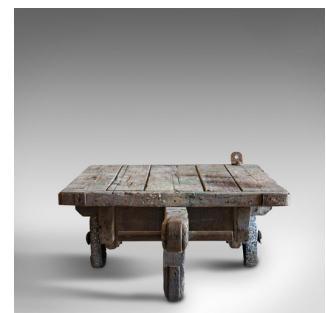




Antique Industrial Porterage Trolley, English, Pine, Railway, Factory, C.1900



DESCRIPTION

Our Stock # 18.6459

This is an antique industrial porterage trolley. An English, pine railway or factory truck, dating to the early 20th century, circa 1900.

- A wonderful antique example of industrial chic
- Displays a desirable aged patina
- Original pine in good order, commensurate with age
- Ideal for conversion into a coffee table
- Dressed with a cast iron block stopper
- Extended pine neck with cast iron handles
- Engraved with JN&S 4
- Riding upon a pair of original steel wheels

This is a fascinating antique porterage trolley. Solid joints and construction, delivered waxed, polished and ready for the home.

Search [London Fine for #18.6459](#) , or scan the QR code for more photos and details

DIMENSIONS

Max Width: 74cm (29.25")

Bed Depth: 98.5cm (38.75")

Depth With Handle: 154cm (60.75")

Max Height: 39cm (15.25")

(When Laid Flat)

