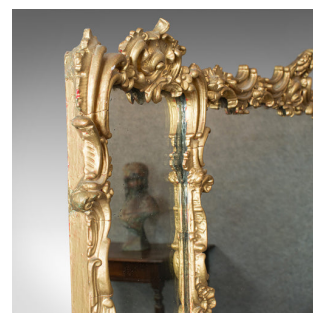


Antique Triptych Mirror, Italian, Gilt Gesso, Overmantle, Hanging, Circa 1850

**DESCRIPTION**

Our Stock # 18.6512

This is an antique triptych mirror. An Italian, gilt gesso overmantle hanging mirror, dating to the mid 19th century, circa 1850.

- Generously sized, attractive mirror
- Displays a desirable aged patina
- Radiant gilt gesso in very good order
- Traditional, heavy plate glass displays coveted light foxing
- Ornate carving with bountiful relief details
- Scroll and foliate detail to entire frame
- Classic triptych style with a large 71cm (28") main mirror plate
- A pair of brass hanging loops for wall mounting

This is a wonderfully ornate antique mirror, with desirable Italian craftsmanship and foxing to mirror glass. Delivered polished and ready for the home.

Search [London Fine for #18.6512](#) , or scan the QR code for more photos and details

DIMENSIONS

Max Width: 119cm (46.75")

Max Depth: 7cm (2.75")

Max Height: 61.5cm (24.25")

Main Glass Width: 71cm (28")

Main Glass Height: 50cm (19.75")

Side Glass Width: 16.5cm (6.5")

Side Glass Height: 49cm (19.25")

