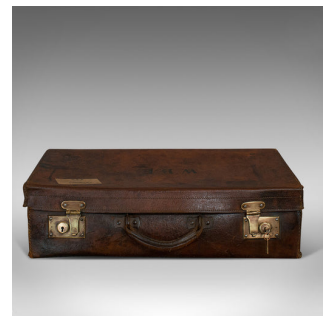


Antique Salesman's Case, English, Leather, Travel Suitcase, Edwardian, C.1910



DESCRIPTION

Our Stock # 18.6520

This is an antique salesman's case. An English, leather-bound travel suitcase, dating to the Edwardian period, circa 1910.

- A splendid travel companion
- Displays a desirable aged patina
- Leather bound with quality double stitching
- Rich mid brown hues throughout and in good order
- Dressed with brass clasps with working, slide barrel locks – key present
- Key complete with small key chain bearing the letter E
- Interior in a bright, cream finish
- Opens upon a pair of leather strap hinges
- Lid finished with the initials W.B.E.
- Resplendent with label for the Great Eastern Railway, detailing travel from London to Hockley
- Articulated, thick leather handle to top

Search [London Fine for #18.6520](#), or scan the QR code for more photos and details

DIMENSIONS

Max Width: 56cm (22")

Max Depth: 16cm (6.25")

Max Height: 35.5cm (14")

