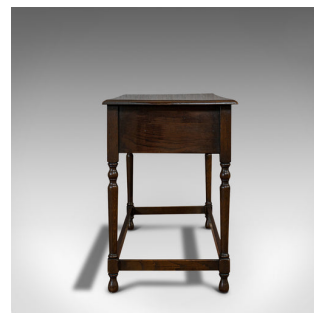


Antique Dresser Base, English, Oak, Side, Hall, Table, Edwardian, Circa 1910



DESCRIPTION

Our Stock # 18.6466

This is an antique dresser base. An English, oak side or hall table, dating to the Edwardian period, circa 1910.

- Elegantly carved low dresser
- Displays a desirable aged patina
- Select oak with rich dark hues
- Fine grain interest to its wax polish finish
- Generous flared dresser top
- Desirable medullary rays abundant to the upper surface
- A suite of three drawers — each carved with pleasing foliate displays
- Dressed with brass drop handles, the outside pair of demi-lune form
- Stout knees at each corner above tapered baluster legs
- United by box stretchers for stability
- Raised upon four bun feet

Search [London Fine for #18.6466](#) , or scan the QR code for more photos and details

DIMENSIONS

Max Width: 122.5cm (48.25")

Max Depth: 53cm (20.75")

Max Height: 76.5cm (30")

