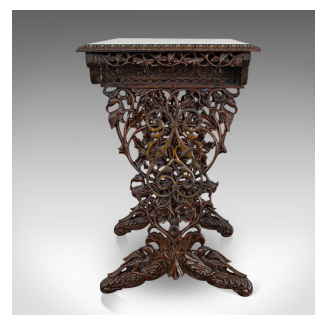


Antique Small Writing Desk, Asian, Rosewood, Side, Lamp, Table, Victorian, 1850



**DESCRIPTION**

Our Stock # 18.6478

This is an antique small writing desk. An Asian, rosewood side or lamp table dating to the early Victorian period, circa 1850.

- Rare and hugely ornate and striking small desk
- Displays a desirable aged patina
- Rosewood resplendent with fine grain interest
- Rich, deep hues throughout its wax polish finish
- Stout top with egg and dart continuous edge carvings
- Front apron with carved frieze panel of foliate motif
- Drawer dressed with an inset, working brass lock – key present
  - Opens to reveal a trio of compartments, the central leather skiver set within a reverse opening lid
- Acanthus corner brackets adorn the edges of each apron
  - Raised upon profusely pierced legs with bird and vine carvings and delightfully ornate brass forms
  - Broad, gently arched stretcher with further foliate and leaf decoration

Search [London Fine for #18.6478](#) , or scan the QR code for more photos and details

**DIMENSIONS**

Max Width: 76cm (30")  
 Max Depth: 46cm (18")  
 Max Height: 72cm (28.25")

