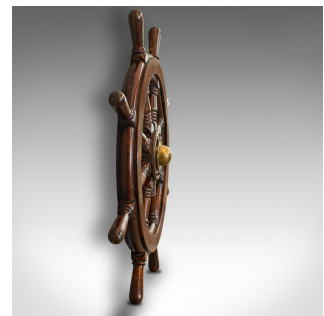


## Antique Ship's Wheel, English, Oak, Brass, Maritime, Decorative, Victorian, 1900

**DESCRIPTION**

Our Stock # 18.6550

This is an antique ship's wheel. An English, oak and brass maritime decorative helm, dating to the late Victorian period, circa 1900.

- High maritime appeal
- Displays a desirable aged patina
- Select oak shows fine grain interest
- Rich russet hues throughout
- 8 turned spokes pass through the middle felloe with tapered handles
- Pegged facing felloe runs the circumference of the rim
- Iron nave plate topped with a brass boss
- Reassuringly heavy at 5.98kg (13.18lb)

This is a charming antique ship's wheel with high collector appeal for those of maritime interest. Delivered waxed, polished and ready for the home.

Search [London Fine for #18.6550](#), or scan the QR code for more photos and details

**DIMENSIONS**

Max Width: 71cm (28")

Max Depth: 9cm (3.5")

Max Height: 71cm (28")

Handle Length: 10cm (4")

Spindle Diameter: 3cm (1.25")

