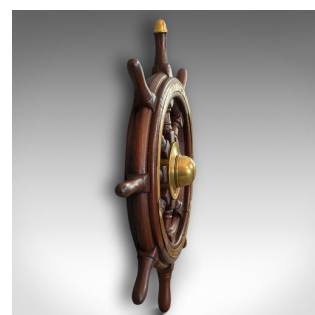


Antique Original Ship's Wheel, English, Oak, Maritime, Collectable, Victorian

**DESCRIPTION**

Our Stock # 18.6551

This is an antique original ship's wheel. An English, oak maritime collectable helm, dating to the Victorian period, circa 1900.

- Appealing maritime display piece
- Displays a desirable aged patina
- Solid oak shows fine grain interest and reassuringly heavy at 5.38kg (11.86lb)
- Rich hues and tones throughout
- Eight turned spokes terminating in gently shaped handles
- King spoke decorated with a brass cap
- Brass plate to the facing felloe adds an appealing contrast
- Further brass to be found on the nave cap and centre boss

This is an attractive antique ship's wheel with high interest for the nautical collector or suitable decor for a seaside abode. Delivered waxed, polished and ready for the home.

Search [London Fine for #18.6551](#), or scan the QR code for more photos and details

DIMENSIONS

Max Width: 60cm (23.5")
Max Depth: 10cm (4")
Max Height: 60cm (23.5")
Handle Length: 9cm (3.5")
Spindle Diameter: 3cm (1.25")

