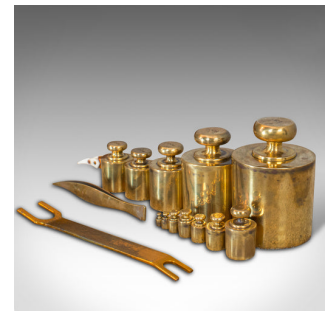


Set Of, Vintage Balance Weights, English, Brass, Scientific, Apothecary, Assay



DESCRIPTION

Our Stock # 18.6669

This is a set of vintage balance weights. An English, brass set of scientific apothecary assay weights, dating to the mid 20th century, circa 1950.

- A quality set of assayer's weights
- Displays a desirable aged patina – one small loss to 2g weight
- Brass weights show bright golden hues
- Quality mahogany box with black velvet interior finish
- Weights presented within velvet-lined recesses
- Round handle weights range in size from 1kg to 1g
- Fractional weights in white metal and residing under a glass slide – handling tongs present
- Oertling, London maker's mark appears within on an enamel emblem

This is a well-presented set of vintage balance weights. Well suited to display within an office or study and delivered polished and ready for the desktop.

Search [London Fine for #18.6669](#), or scan the QR code for more photos and details

DIMENSIONS

Max Width: 21cm (8.25")

Max Depth: 12.5cm (5")

Max Height: 11cm (")

