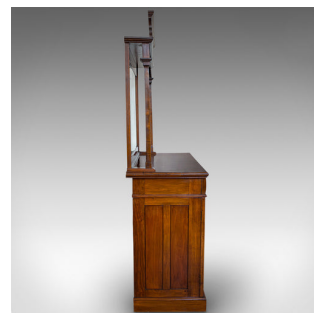


Tall Vintage Dresser, Walnut, Sideboard, Cabinet, Art Nouveau Taste, Circa 1980



DESCRIPTION

Our Stock # 18.6671

This is a tall vintage dresser. An English, walnut sideboard cabinet in Art Nouveau taste, dating to the late 20th century, circa 1980.

- Generously sized with Art Nouveau overtones
- Displays a desirable aged patina
- Select walnut shows fine grain interest
- Original mirror plate in good order
- Grand surmount with scrolled ends and tiered crown moulding
- Heraldic shield motif with foliate wings over carved, mottled ground
- Supported by slender pilasters united by shaped apron with further foliate detail
- Bevelled mirror with bright, clear optics casts good light upon the rolled dresser top
- Pair of foliate carved drawers arranged over two cabinet doors
- Doors resplendent with shaped field panels featuring bold scroll motif
- Each dressed with silver nickel drop handles over shaped backs

Search [London Fine for #18.6671](#) , or scan the QR code for more photos and details

DIMENSIONS

Max Width: 131.5cm (51.75")

Max Depth: 58cm (22.75")

Max Height: 219cm (86.25")

Mirror Plate Width: 71cm (28")

Mirror Plate Height: 100cm (39.25")

Dresser Height: 106.5cm (42")

