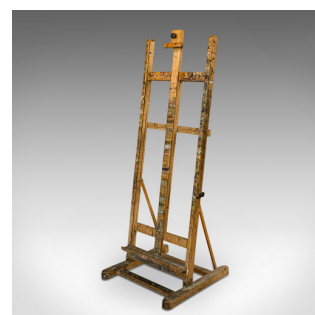
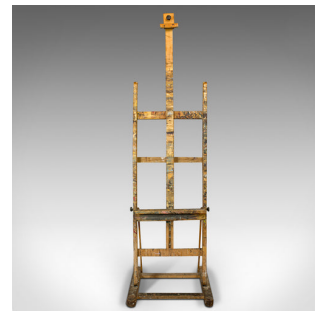


## Vintage Studio Easel, English, Beech, Artist's Stand, Adjustable, Circa 1970

**DESCRIPTION**

Our Stock # 18.6660

This is a vintage studio easel. An English, beech artist's stand with adjustable height, dating to the late 20th century, circa 1970.

- A time-served artist's easel
- Displaying a desirable aged patina
- Beech in good order with an appealing paint covered finish
- Generous size to accommodate media up to 120.5cm (47.5") in height
- Adjustable rack aids comfortable working heights
- Variable rake operates by a pair of adjustable knobs to side

This is a charming vintage studio easel, with remnants of masterpieces past. Solid joints and construction, delivered ready for the artist.

Search [London Fine for #18.6660](#) , or scan the QR code for more photos and details

**DIMENSIONS**

Max Width: 55.5cm (21.75")

Max Depth: 58cm (22.75")

Lowest Height: 146.5cm (57.75")

Extended Width: 236cm (93")

