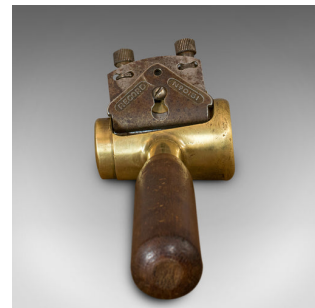


Vintage Taper Maker, English, Brass, Shipwright's Woodworking Tool, Circa 1950



DESCRIPTION

Our Stock # 18.6717

This is a vintage taper maker. An English, brass shipwright's woodworking tool, dating to the mid 20th century, circa 1950.

- Mid-century crafting tool
- Displays a desirable aged patina
- Brass offers fine golden hues
- Appealing hardwood handles with gently chamfered edges
- Record No.0151 shave blade with adjustable knobs

This is a charming vintage taper maker, ideal for display. Delivered polished and ready for the home.

Search [London Fine for #18.6717](#) , or scan the QR code for more photos and details

DIMENSIONS

Max Width: 7.5cm (3")

Max Depth: 34.5cm (13.5")

Max Height: 7.5cm (3")

LIST PRICE

£295.00

