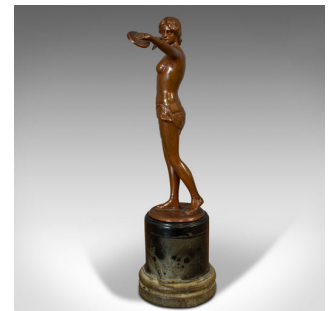
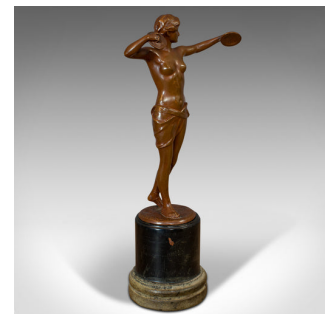
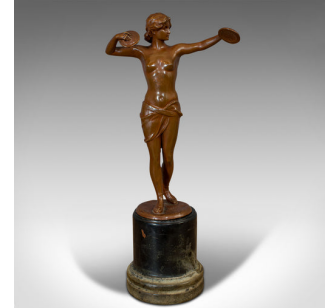


## Vintage Female Figure, French, Bronze Spelter, Art Deco, Statuette, Circa 1930



## DESCRIPTION

Our Stock # 18.6726

This is a vintage female figure. A French, bronze spelter Art Deco statuette, dating to the early 20th century, circa 1930.

- Lithe gymnastic form
- Displays a desirable aged patina
- Bronze spelter in good order
- Rich caramel hues throughout
- Elegant Art Deco female posing with discus
- Good detail to face and hair
- Crafted in classic contrapposto pose
- Raised upon a circular podium base in black marble

This is an attractive vintage female figure in sought-after Art Deco taste. Delivered polished and ready for the home.

Search [London Fine for #18.6726](#) , or scan the QR code for more photos and details

## DIMENSIONS

Max Width: 12cm (4.75")

Max Depth: 7.5cm (3")

Max Height: 26.5cm (10.5")

