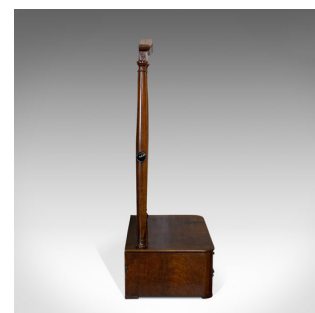


Antique Toilet Mirror, English, Walnut, Vanity, Empire Style, Victorian, C.1880



**DESCRIPTION**

Our Stock # 18.6628

This is an antique toilet mirror. An English, walnut vanity mirror in Empire style, dating to the Victorian period, circa 1880.

- Attractive example of the Empire style
- Displays a desirable aged patina
- Select walnut shows fine grain interest
- Mirror plate with desirable, light foxing
- The apex surmount supported by turned spindles
- Mirror frame benefits from ebonised quarter blocks
- Inlaid gold tooling adds appealing detail to the frame
- Round, ebonised adjustment knobs to each side
- The pedestal unit arranged as a pair of drawers
- Dressed with delightful small metal pulls
- An inset, brass lined lock to the upper drawer – key absent

Search [London Fine for #18.6628](#) , or scan the QR code for more photos and details

**DIMENSIONS**

- Max Width: 58cm (22.75")
- Max Depth: 32cm (12.5")
- Max Height: 91cm (35.75")
- Mirror Plate Width: 33.5cm (13.25")
- Mirror Plate Height: 53.5cm (21")

**LIST PRICE**

£895.00

