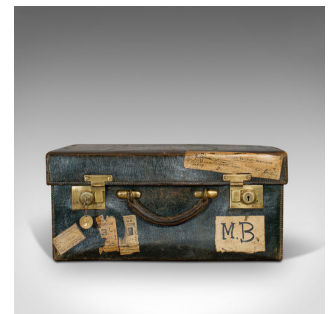


Antique Travel Case, Leather, Salesman's Suitcase, JW Allen, Strand, Edwardian



DESCRIPTION

Our Stock # 18.6706

This is an antique travel case. An English, leather salesman's suitcase, by JW Allen, of 37 Strand in London, dating to the Edwardian period, circa 1910.

- Quality Edwardian luggage
- Displays a desirable aged patina
- Stitched leather exterior in good order throughout
- Decorated with several period travel labels
- The lid opens on leather strap hinges
- Lid interior featuring a pair of pen loops, either side of a sleeve pocket
- Dressed to the centre with a broad leather handle
- Brass sliding clasps with working inset locks – key present
- Monogram to lid reads M.M.B.
- Travel labels for the Great Eastern Railway and John Player's Tobacco
- Interior graced with the Royal Appointment maker's mark

Search [London Fine for #18.6706](#) , or scan the QR code for more photos and details

DIMENSIONS

Max Width: 44.5cm (17.5")

Max Depth: 35cm (13.75")

Max Height: 20.5cm (8")

