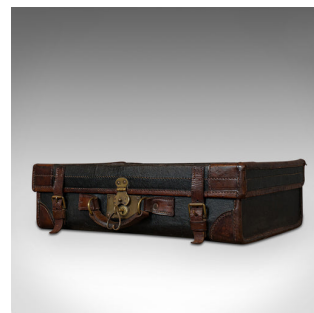


## Antique Suitcase, English, Leather, Salesman, Banker, Travel Case, Edwardian



## DESCRIPTION

Our Stock # 18.6715

This is an antique suitcase. An English, leather salesman's or banker's travel case, dating to the Edwardian period, circa 1910.

- Pleasingly appointed Edwardian case
- Displays a desirable aged patina
- Leather with quality stitched seams in good order
- Further leather bounding for lasting appeal
- Club shape clasp with sliding lock, working and key present
- Pair of leather straps for keeping the case secure
- Thick leather handle to centre
- Cream hues to the canvas lined interior
- The base dressed with an excerpt from the Western Times newspaper
- An Exeter edition of the paper, dated to the 17th August, 1945

Search [London Fine for #18.6715](#) , or scan the QR code for more photos and details

## DIMENSIONS

Max Width: 51.5cm (20.25")

Max Depth: 37cm (14.5")

Max Height: 15cm (6")

