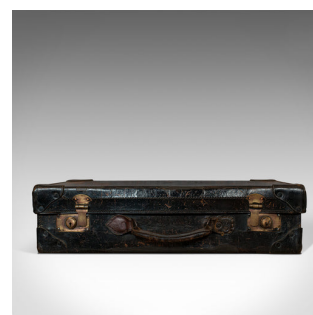


Antique Suitcase, English, Leather, Travel, Salesman, Officer, Case, Edwardian



DESCRIPTION

Our Stock # 18.6711

This is an antique suitcase. An English, leather travelling salesman's or officer's case, dating to the Edwardian period, circa 1910.

- Generously sized antique case
- Displays a desirable aged patina
- Leather shows deep black hues
- Stitched seams and bound corners exude quality
- Superb patination to the lid and base, testament to years of faithful service
- Dressed with a pair of brass sliding clasps with working locks – key present
- Central handle crafted from comfortable leather
- The cream interior in its original condition, with small marks commensurate with age

This is an a desirably aged antique suitcase, with great patina to the durable leather exterior. Delivered polished and ready for duty.

Search [London Fine for #18.6711](#) , or scan the QR code for more photos and details

DIMENSIONS

Max Width: 61.5cm (24.25")

Max Depth: 37cm (14.5")

Max Height: 15.5cm (6")

