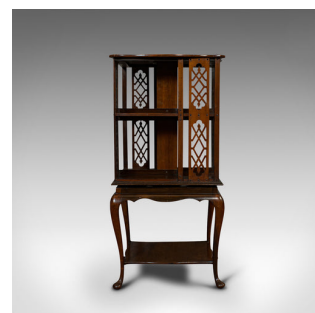
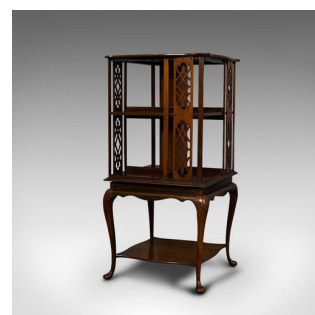


Antique Revolving Library, English, Walnut, Bookcase Table, Edwardian, C.1910



**DESCRIPTION**

Our Stock # 18.6765

This is an antique revolving library. An English, walnut bookcase table, dating to the Edwardian period, circa 1910.

- Impressive, ornate bookcase
- Displays a desirable aged patina
- Select walnut resplendent with fine grain interest
- Rich, deep russet hues to the wax polish finish
- The bookcase upper rotates smoothly around its central axis
- Four generously sized book recesses with a width of 23cm (9")
- Attractive, pierced fretwork carving to each corner
- Lower table presented with a lovingly carved, shaped apron
- Stretcher shelf ideal for small display objects
- Raised upon four, sinuous cabriole legs with pad feet

Search [London Fine for #18.6765](#), or scan the QR code for more photos and details

**DIMENSIONS**

- Max Width: 42.5cm (16.75")
- Max Depth: 42.5cm (16.75")
- Max Height: 87cm (34.25")
- Shelf Width: 23cm (9")
- Shelf Depth: 14cm (5.5")
- Upper Recess Height: 19cm (7.5")
- Lower Recess Height: 23cm (9")

