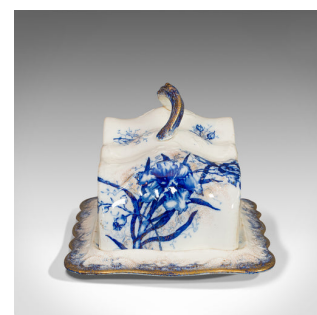


Antique Cheese Keeper, Decorative, Dish, John Maddock, Orchid, Victorian, C.1900



DESCRIPTION

Our Stock # 18.6731

This is an antique cheese keeper. An English, ceramic decorative kitchen or sideboard dish by John Maddock and Sons in the Orchid pattern, dating to the Victorian period, circa 1900.

- Practical example of Victorian ceramics with fine detail
- Displays a desirable aged patina
- Ceramic in good order throughout
- Profuse decoration in pleasing blue and golden hues
- Keeper lid replete with foliate twisting handle
- Cobalt blue orchid scenes and patterns abound
- Golden detail catches the eye throughout the glaze
- Stamped to the bottom with the John Maddock Royal Vitreous mark and 'Orchid' name

This is an appealing antique cheese keeper, ideally suited to adding a decorative centrepiece to a dinner party or festive occasion. Delivered polished and ready for the home.

DIMENSIONS

Max Width: 20.5cm (8")
Max Depth: 26.5cm (10.5")
Max Height: 16.5cm (6.5")



Search [London Fine for #18.6731](#), or scan the QR code for more photos and details

+44 (0) 207 1833 511

London Fine Ltd
The Antique Village
The Old Whiteways Cider Factory
Hele, Devon, EX5 4PW

sales@londonfine.co.uk
E. & O. E.