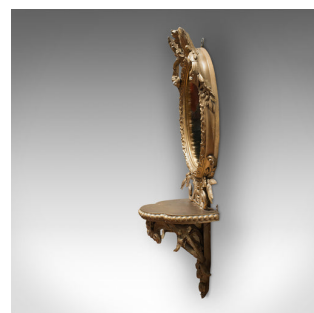
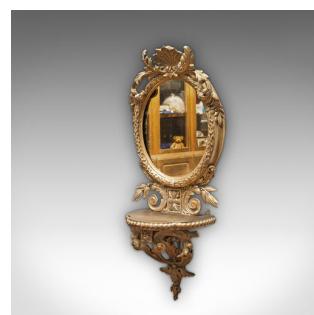
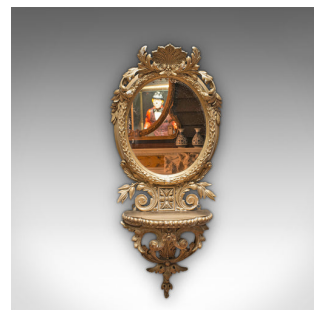


Antique Wall Mirror, French, Gilt Gesso, Oval, Ornate, Victorian, Circa 1850



DESCRIPTION

Our Stock # 18.6618

This is an antique wall mirror. A French, gilt gesso oval mirror with ornate frame, dating to the early Victorian period, circa 1850.

- Superb detail and appealing hues
- Displaying a desirable aged patina
- Gilt gesso shows wear commensurate with age
- Original mirror plate shows sought after light foxing
- Bold foliate surmount with scrolled leaf detail to each side
- Frame edge decorated with laurel wreath border
- Display shelf beneath the mirror plate a useful candle platform
- Long-drop base with further ornate foliage

This is a fascinating and wonderfully decorative antique wall mirror. Showing desirable light foxing to the original mirror plate and bold gilt gesso forms, this is a fine addition to any wall. Delivered polished and ready for the home.

Search [London Fine for #18.6618](#), or scan the QR code for more photos and details

DIMENSIONS

Max Width: 28cm (11")
 Max Depth: 17cm (6.75")
 Max Height: 65cm (25.5")
 Mirror Plate Width: 19.5cm (7.75")
 Mirror Plate Height: 24cm (9.5")

LIST PRICE

£1,195.00

