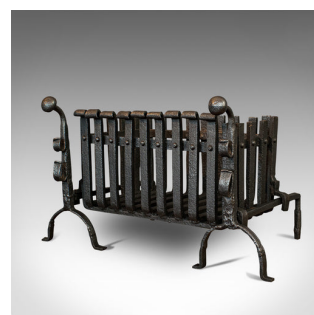


## Antique Fire Basket, Andirons, Cast Iron, Fireside, Grate, Fire Dogs, Victorian



### DESCRIPTION

Our Stock # 18.6805

This is an antique fire basket with andirons. An English, cast iron fireside set with grate and fire dogs, dating to the Victorian period, circa 1900.

- Furnish the hearth with Victorian appeal
- Displaying a desirable aged patina
- Cast and wrought iron craftsmanship with desirable ageing
- Presenting a consistent, quality graphite finish
- The fire basket with a scroll top front fascia
- Brackets to the base for resting upon the sturdy andirons
- Fire dogs replete with spit rests — ideal for warming pots or as a rotisserie
- Standing upon charming arched front legs with a straight rear

This is an antique fire basket set, with Victorian fireplace appeal. Delivered polished and ready for the home.

Search [London Fine for #18.6805](#) , or scan the QR code for more photos and details

### DIMENSIONS

Max Width: 76cm (30")  
 Max Depth: 44.5cm (17.5")  
 Max Height: 42.5cm (16.75")  
 Basket (Internal) Width: 44.5cm (17.5")  
 Basket (Internal) Depth: 23.5cm (9.25")  
 Basket (Internal) Height: 18.5cm (7.25")

