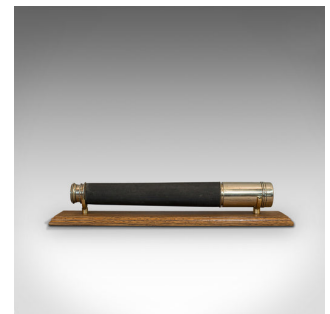


Vintage Telescope, Brass, Officer Of The Watch, Single Draw, Ross London, 1935



DESCRIPTION

Our Stock # 18.6867

This is a vintage telescope. An English, brass 'officer of the watch' single draw refractor by Ross of London, dating to the mid 20th century, circa 1935.

Perfect for bird watching, landscape appreciation, wildlife, or maritime observation. Equally suitable for observing the night sky.

- Appealing vintage telescope by a renowned maker
- Displaying a desirable aged patina
- Silvered brass offering bright, reflective tones
- Clear, bright objective with 45mm diameter
- Front element protected by sliding sun shade
- Primary barrel dressed distinctively in later, quality textured metal weave
- Flared eye-cup with swivel dust cover and superb, concentric ring finish
- The draw tube engraved with the Ross London logo
- Further reads; Pattern 373, No. 81150
- Marked NP38 — as tested and checked by the National Physical Laboratory in 1938

Search [London Fine for #18.6867](#), or scan the QR code for more photos and details

DIMENSIONS

Closed Length: 42cm (16.5")

Max Drawn Length: 70cm (27.5")

Objective Glass Diameter: 45mm (1.75")

Find out more about Ross here...

