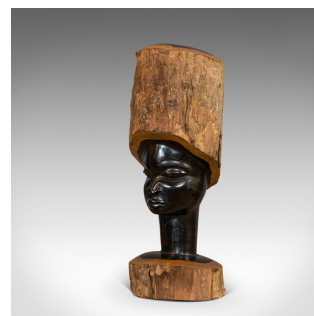
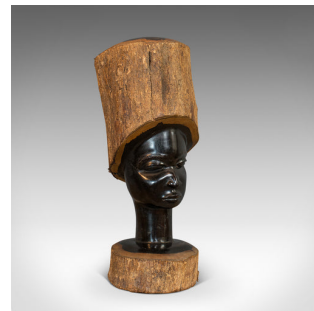


## Pair Of, Antique Carved Heads, African, Ebony, Decorative Statue, Victorian



### DESCRIPTION

Our Stock # 18.6804

This is a pair of antique carved heads. An African, solid ebony decorative statue, dating to the late Victorian period, circa 1900.

- Highly appealing folk art
- Displays a desirable aged patina
- Ebony stocks with carved, polished centres
- Natural grain contrasts superbly with the dark ebony hues
- Carved female heads with distinctive faces and detailed features
- Stood upon stout bases and pleasingly heavy at 10.1kg (22.2lb) and 7.8kg (17.2lb)

This is an interesting pair of antique carved heads, with high appeal to collectors of African art. Delivered polished and ready for display.

Search [London Fine for #18.6804](#) , or scan the QR code for more photos and details

### DIMENSIONS

First Head Width: 17cm (6.75")  
 First Head Depth: 18cm (7")  
 First Head Height: 47cm (18.5")  
 Second Head Width: 17.5cm (7")  
 Second Head Depth: 15cm (6")  
 Second Head Height: 46cm (18")

