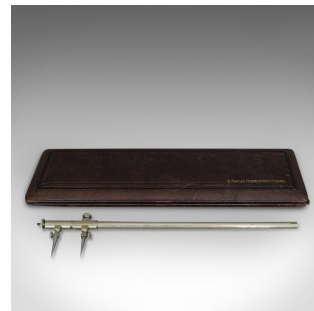


Vintage Beam Compass, German, Cartographer, Architect, Drawing, Riefler, C.1930



DESCRIPTION

Our Stock # 18.6786

This is a vintage beam compass. A German, silver nickel cartographer's or architect's drawing instrument by Riefler, dating to the early 20th century, circa 1930.

- Quality German instrument set
- Displays a desirable aged patina
- Silver nickel instrument body in good order
- Dark brown textured carry box dressed with deep black velvet lining
 - Beam compass known as the R1 model, with two extending tubular beams for a larger radius
- Replete with a set of three ruling pens with adjustable verniers
- Maker's mark to the lid reads C. Riefler, Nesselwang & München

This is an appealing, high quality antique beam compass, by a renowned German instrument maker. Presenting well within its case, this set is a fine addition to any desk. Delivered ready for display or use.

Search [London Fine for #18.6786](#), or scan the QR code for more photos and details

DIMENSIONS

Max Width: 33cm (13")
Max Depth: 10cm (4")
Max Height: 3cm (1.25")
Beam Length: 29cm (11.5")
With 1st extension: 49cm (19.25")
With 2nd extension: 69cm (27.25")

